

Backup and Restore

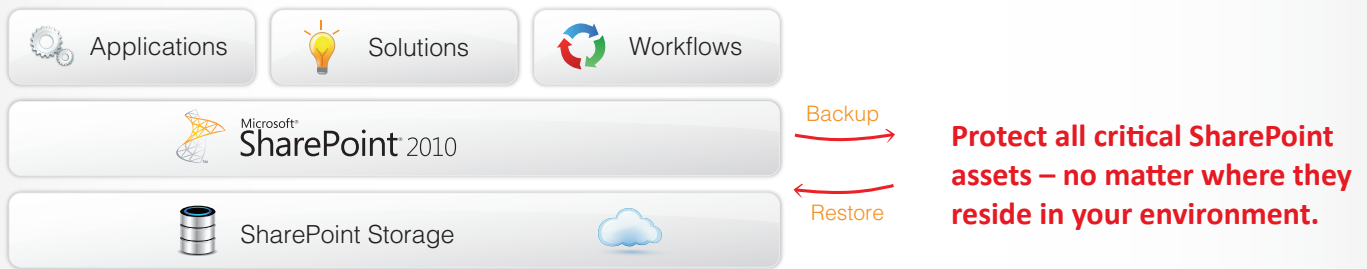


Migrate. Integrate. Manage. Optimise. **Protect.** Report.

Protect. Business-aware, comprehensive, SLA-driven protection of Microsoft® SharePoint® 2010 environments.

Key Benefits

- Protect your organisation from disasters with truly comprehensive backup for your entire SharePoint environment, including all content, customisations, solutions and features
- Minimise business disruptions caused by service interruptions or accidental deletions with efficient recovery of all SharePoint components, databases, indexes and configurations
- Satisfy even the most aggressive SLAs by minimising downtime, data loss and restore times with granular restore of select SharePoint components
- Track, manage and report on all backup and restore processes through a centralised management console to monitor and enforce compliance with SharePoint protection policies



DocAve Data Protection Scope

Fast, Flexible and Intelligent Backup and Restore for SharePoint 2010

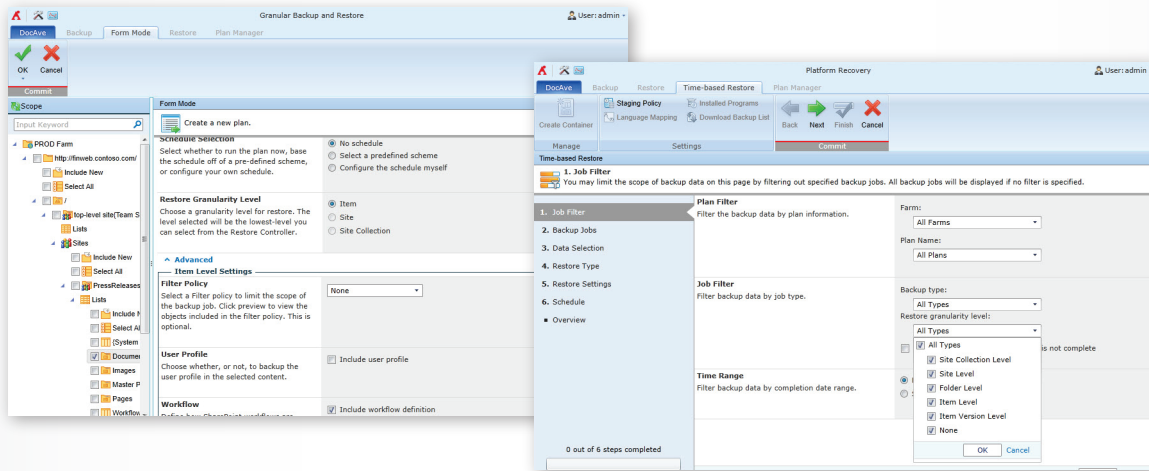
DocAve Backup and Restore for SharePoint 2010 provides full-fidelity backup and recovery, protecting individual content items to entire SharePoint environments and all farm-level components, maintaining all metadata, security settings and version histories. Featuring a highly intuitive user interface, enterprise-strength scalability and deep integration with leading hardware providers, DocAve Backup and Restore helps to simplify truly comprehensive SharePoint protection.



FREE
30-DAY TRIAL

Technical Overview

- Backup and recover entire SharePoint farms, or selective components, including back-end SQL databases, all configurations, Index/Job servers, front-end IIS settings, file system resources and custom application databases
- Full-fidelity backup and restore of all SharePoint content – including sites, lists, libraries, workflow definition and instance, configurations, access permissions, metadata and version histories
- Full, incremental and differential backup capabilities for selective SharePoint farm components enable backup plans and schedules to focus on frequent backup of high-priority data, improving backup operations and storage efficiency
- Rapid restore of SharePoint content with AvePoint's InstaMount™ technology, enabling fast recovery of granular content from a full database backup without first staging the database
- Leverage DocAve's centralised browser-based interface to support and integrate all your SharePoint environments, supporting true multi-farm protection
- Simplify backup and restore planning with "point & click" content selection and wizards for step-by-step guidance
- Backup to centrally managed tiered storage, leveraging built-in encryption, compression and pruning policies
- Backup to storage platforms including NetApp, EMC Centrea and Dell DX Object Storage to take advantage of advanced features like de-duplication and self-healing



Configure plan settings for ad-hoc backups, including storage location, data compression, encryption, filter policy, workflows and notification type.

As with all DocAve products, DocAve Backup and Restore leverages only fully supported Microsoft methodologies and APIs.

Next Steps

How to Buy DocAve

Call: +44-0-207-421-5199
E-mail: SalesUK@AvePoint.com

Evaluate DocAve for free at:
www.AvePoint.com/download

AvePoint EMEA Headquarters

AvePoint UK Ltd.
Farringdon Point
29 – 35 Farringdon Road (Floor 3)
London EC1M 3JF

See why you should choose AvePoint as a strategic SharePoint partner, visit www.avepoint.eu/about.

Join the AvePoint community at www.docave.com.